

# Norfolk Naturally

ISSUE 8

## Courtesy of Countryside Cottages

Telephone 01263 713133 email ccottages@dialstart.net www.countrysidecottagesnorfolk.com

### THIS SEASON MORE SPACE LESS MONEY

Book a larger cottage (sleeping 6 upwards) for a smaller party and receive a reduced rate. Call 01263 713133 or visit [www.countrysidecottagesnorfolk.com](http://www.countrysidecottagesnorfolk.com) for more details and prices.

#### Some Seasonal Events

##### NOVEMBER

7 North Norfolk's Christmas Market  
10-3pm. Approx 90 Stalls.  
Fakenham High School

27-29 Crafts at Christmas  
Sandringham

##### DECEMBER

Various N. Norfolk Railway Santa Specials  
[www.nnrailway.co.uk/santas.php](http://www.nnrailway.co.uk/santas.php)  
Departing from Sheringham station the steam trains take passengers through some of Norfolk's most beautiful winter scenery whilst the adults are served sherry and mince pies and the children receive a biscuit and a soft drink

4 and 5 Magic of Christmas 5- 9pm  
Blickling Hall (NT)  
Magical evening visit to parts of the Hall decorated for Christmas. Large heated craft marquee filled with Christmas gifts, carol singing and entertainment for all the family.



*Make the season sparkle...  
with a short break*

Where could be better to find special gifts than Holt all lit up for Christmas. The lights are switched on at 6.30pm on November 25th... and the atmosphere is truly magical... with mulled wine and many retailers offering extended opening. Explore a little further afield and you will find many special seasonal events such as Christmas Fayres

**SEE LIST OPPOSITE**

Welcome to our new additions...



**SERENITY**, Blakeney Sleeps 4/8  
Set back behind pretty, sunny gardens Serenity is the perfect family home with a spacious layout and plenty of parking. Within walking distance is the quayside, shops, seal trips, pubs, restaurants and wonderful coastal walks.  
**FROM £450 p/w**



**MOONFLEET** Salthouse Sleeps 4  
A great deal of care and thought has gone into the complete renovation of Moonfleet which now provides a charming luxury cottage on a quiet lane setting a stones throw from the Coast. Highly recommended.  
**FROM £425 p/w Short Breaks £350**

## Health Shop

- Dr Hauschka Holistic Skincare
- Non-toxic Household Products
- Natural Toiletries • Gluten and Wheat Free Products
- Dried Wholefoods • Health Supplements

## Nature's Haven

35 Bull Street, Holt, Norfolk  
Phone/Fax 01263 711471





# THE BLAKENEY WHITE HORSE

01263 7405744 HIGH ST BLAKENEY NR25 7AL  
www.blakeneywhitehorse.co.uk

FINE FOOD  
AND WINE  
\*  
REAL ALES  
\*  
LOVELY  
BEDROOMS



PRODUCE THIS ADVERT TO RECEIVE A COMPLIMENTARY GLASS OF WINE  
OR PINT OF REAL ALE WHEN DINING (ONE PER PERSON TO A MAXIMUM OF FOUR)

**MORE LATEST FINDS...** browse our website [www.countrysidecottagesnorfolk.com](http://www.countrysidecottagesnorfolk.com)  
for further pictures and full details or call us on 01263 713133.



**THE COACH HOUSE**, Snettisham Sleeps 8  
The Coach House is a lovely renovation of the original building, built of local Carrstone and recently redecorated throughout. The house provides spacious accommodation and is ideally located at the heart of Snettisham **FROM £695**



**WALNUT TREE**, Stiffkey Sleeps 4/6  
Originally two farm workers cottages, a sensitive renovation has brought quality and charm to a delightful higgledy piggledy cottage with a lovely south-facing outlook in the heart of the village. The décor is particularly attractive. Neutral background tones with restful green and subtle terracotta accents, together with hand made curtains all add to the subtle atmosphere of this old cottage. **FROM £425**



**CARPENTERS COTTAGE**, Holt, Sleeps 3  
The delightful interior was recently sympathetically refurbished with a great deal of flair, using high-quality fabrics and furnishing and a carpentry theme to reflect the history of the cottage. From the hand-built kitchen to the sparkling white bathroom nicely accentuated by local flint tiles, the cottage radiates cosy charm. **FROM £375**



**WOODCOTE**, Blakeney Sleeps 4  
Conveniently located a 5 mins stroll from the quayside and shops, Woodcote has been renovated and extended with the addition of a superb sunroom with beautiful views over the garden to the fields beyond. Ensuites to both bedrooms and a spacious lounge complete with woodburning stove complete a beautifully presented home. **FROM £450**



**TURNSTONES**, Blakeney Sleeps 3  
Recently renovated, Turnstones which was originally part of the Bakery is now a delightful cosy cottage with the additional benefit of parking and a small courtyard garden in the heart of the village. An ideal location just up from the Quayside and an easy walk to all the facilities of Blakeney. **FROM £350**



**THE DOGGER INN**, Wells Sleeps 4-6  
A wonderful tasteful conversion of the old Inn provides an excellent standard of accommodation with top quality facilities whilst retaining many original features and much character. A superb location at the heart of Wells with a West facing garden and parking. **FROM £475 p/w**

*All information correct at time of printing*



Helping you to help our wildlife.  
Now is the time to install our new  
'easy clean' nest boxes and feeders.

Find Bird Ventures at 9B Chapel Yard, Albert Street, Holt.  
Tel 01263 710203 [www.birdventures.co.uk](http://www.birdventures.co.uk)



THE  
GEORGE  
HOTEL CLEY

FINE FOOD AND WINE  
REAL ALES  
LOVELY BEDROOMS WITH BEAUTIFUL VIEWS



THE GEORGE HOTEL AT CLEY 01263 740652  
www.thegeorgehotelatcley.co.uk

PRODUCE THIS ADVERT TO RECEIVE A COMPLIMENTARY GLASS OF WINE OR PINT OF REAL ALE WHEN DINING (ONE PER PERSON TO A MAXIMUM OF FOUR)

to celebrate stylish holidays at home we are offering **up to £350 off selected cottages** during october 2009\*

**Stella Maris, Field Dalling** Sleeps 2  
Mid was £275 now £255  
High was £325 now £295 3 Nights was £210 now £195

**Old Coach House, Holt** Sleeps 3  
Mid was £375 now £355  
High was £395 now £375 3 Nights was £240 now £230

**Well Cottage, Binham** Sleeps 3  
Mid was £385 now £360  
High was £440 now £395 3 Nights was £275 now £255

**Bure View, Buxton** Sleeps 4  
Mid was £425 now £400  
High was £500 now £450 3 Nights was £275 now £245

**Bluebell, Upper Sheringham** Sleeps 5  
Mid was £495 now £470  
High was £550 now £515 3 Nights was £300 now £275

**Holly Cottage, Langham** Sleeps 5  
Mid was £475 now £450  
High was £525 now £500 3 Nights was £300 now £275

**Keepers Cottage, E Beckham** Sleeps 6  
Mid was £475 now £450  
High was £500 now £480 3 Nights was £295 now £275

**Stable Court, Langham** Sleeps 8  
Mid was £695 now £600  
High was £950 now £600 3 Nights was £650 now £600

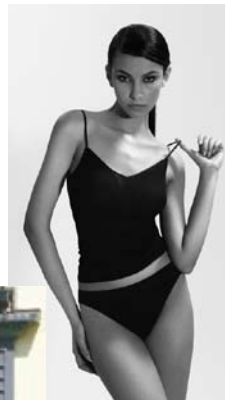
**Fridays Barn, Salthouse** Sleeps 8/9  
Mid was £775 now £715  
High was £1000 now £850 3 Nights was £675 now £650

\*Some date restrictions apply, please enquire for details.  
Normal booking conditions apply

# Fresh Faces

**Pollard & Read**  
36 High Street Holt,  
Norfolk, NR25 6BH

Email: info@pollardandread.co.uk  
www.pollardandread.co.uk



Pollard & Read is a specialist lingerie shop in Holt offering a wide range of underwear to suit your everyday needs or that special occasion. Customers enjoy the relaxed and discrete design of the shop. Our selection of brands is extensive, and includes Marie Jo, Chantelle, Hanro, Wolford, Spanx, Passionata, Janet Reger and more. We stock first bras, sports and maternity underwear, nightwear, swimwear and hosiery and offer a professional fitting service to find the perfect item to suit you.



**BACK TO THE  
GARDEN**

Fresh local food,  
organic produce & café

A couple of minutes from Holt,  
west of Letheringssett on A148

Open seven days a week

☎ 01263 715996 www.back-to-the-garden.co.uk



# Photographers' Gallery - Holt

The regions' leading fine art photography gallery, featuring permanent collections from acclaimed photographers Andrew Midgley and David Tipling plus wedding, portrait and lifestyle photography by award winning photographer Roger Griffiths.

Landscape and Wildlife photography courses • High quality framing service.  
All enquiries: 01263 710222 [info@photographersgallery-holt.com](mailto:info@photographersgallery-holt.com)  
5 & 7 Cromer Road (nr Post Office), Holt NR25 6ET. [www.photographersgallery-holt.com](http://www.photographersgallery-holt.com)

*Photo Credits* Cover masthead: Felbrigg © Andrew Midgley [www.andrewmidgleyphotography.com](http://www.andrewmidgleyphotography.com)  
Above left: Fox © David Tipling [www.davidtipling.com](http://www.davidtipling.com) Above right: © Roger Griffiths

## Exhibition Diary

### Working North Norfolk

by Jane Hodgson at the Pinkfoot Gallery opens noon 19th September everyone welcome.

A collection of plain air oil paintings of rural north Norfolk



### A WILD DAY OUT THIS WINTER

If you and your family are struggling for ideas about what to do over the autumn and winter, then Pensthorpe Nature Reserve & Gardens, near Fakenham, in Norfolk, could be just what you are looking for.

It's the place to go to see nature at its very best and there is a fantastic range of things to do and see, no matter what the time of year. Wildlife lovers will know that the BBC Springwatch programmes were filmed at Pensthorpe this year - and no wonder - because with its wonderful array of flora, fauna, gorgeous gardens and stunning scenery there is something for everyone in the family to enjoy.

So what is there to do at Pensthorpe when the nights are drawing in? From the 24th October at 4pm you can sit back and relax in the warmth and comfort of the Viewing Gallery and let our wardens tell you about all the birds coming into feed at our daily floodlit feed. It is also a great time of year to head out to the Wader Scrape and sit in the hide and see first hand the large flocks of teal, gadwall and wigeon that come in at this time of year. If you have a thirst for finding out about the past, the Wensum Discovery Tour runs until the 1st November and is a superb way to experience the hidden treasures of Pensthorpe.

A stroll around Pensthorpe in the autumn and winter is a glorious experience and there is plenty of wildlife to spot and wonderful scenic views to enjoy. And after your walk why not



revive yourself by paying a visit to the Courtyard Café for a warming bowl of freshly-made soup, a home-made scone or a cup of tea?



Red Squirrel Photo © Annie Kerridge

When the festive season is upon us, The Gift Shop is the ideal place to come and shop for those special gifts. For an unusual gift that will really make a difference, why not adopt one of our birds or adorable Red Squirrels and help us with our ongoing conservation work? We are even open on New Year's Day - the perfect way to blow away the cobwebs after all the festive fuss is over!

Visit [www.pensthorpe.com](http://www.pensthorpe.com) or call 01328 851465 for more information and opening times.



High Street • Cley-Next-The-Sea • Norfolk • NR25 7RB  
T: 01263 740947 • E: [info@pinkfootgallery.co.uk](mailto:info@pinkfootgallery.co.uk) • W: [www.pinkfootgallery.co.uk](http://www.pinkfootgallery.co.uk)

### 'To The Ark'

A specially commissioned exhibition of paintings, drawings and ceramic sculpture upon the theme of 'Two by Two' - creatures great and small! Our popular artists Georgina Warne, Kate Leiper, Libby Turner, Anthony D. Dunkley and Graham Ward have been busy.



Wednesday 25th November - 9th December

### THE RED DOT GALLERY

2 LYLES COURT, LEES YARD, HOLT, NORFOLK NR25 6HS.  
01263 710287 [www.thereddotgallery.com](http://www.thereddotgallery.com)

hand picked natural products for bed, bath & beauty

Victoria Goss  
natural indulgence

Find gorgeous gifts for everyone this Christmas at Victoria Goss in Bull Street, Holt

Tel 01263 711627

